



Get a bird's-eye view of your fire and security system.  
See all your alarms and device in a single, streamlined interface.



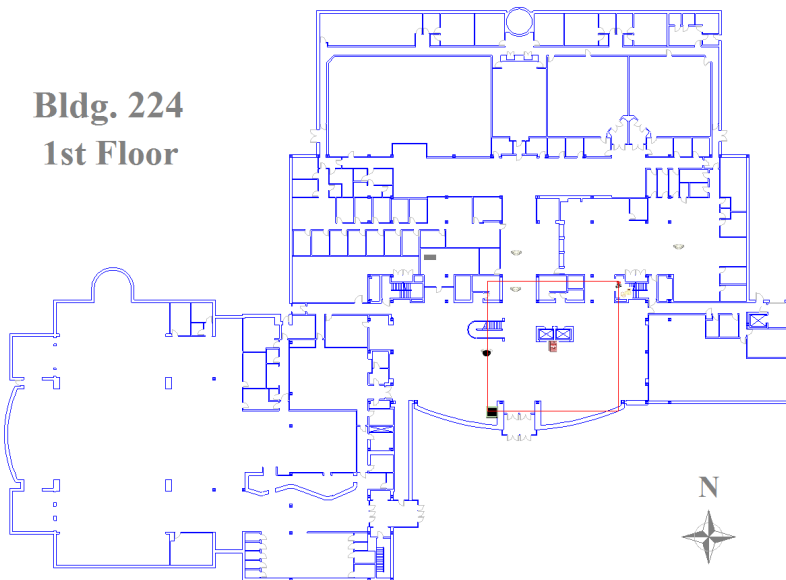
## Features

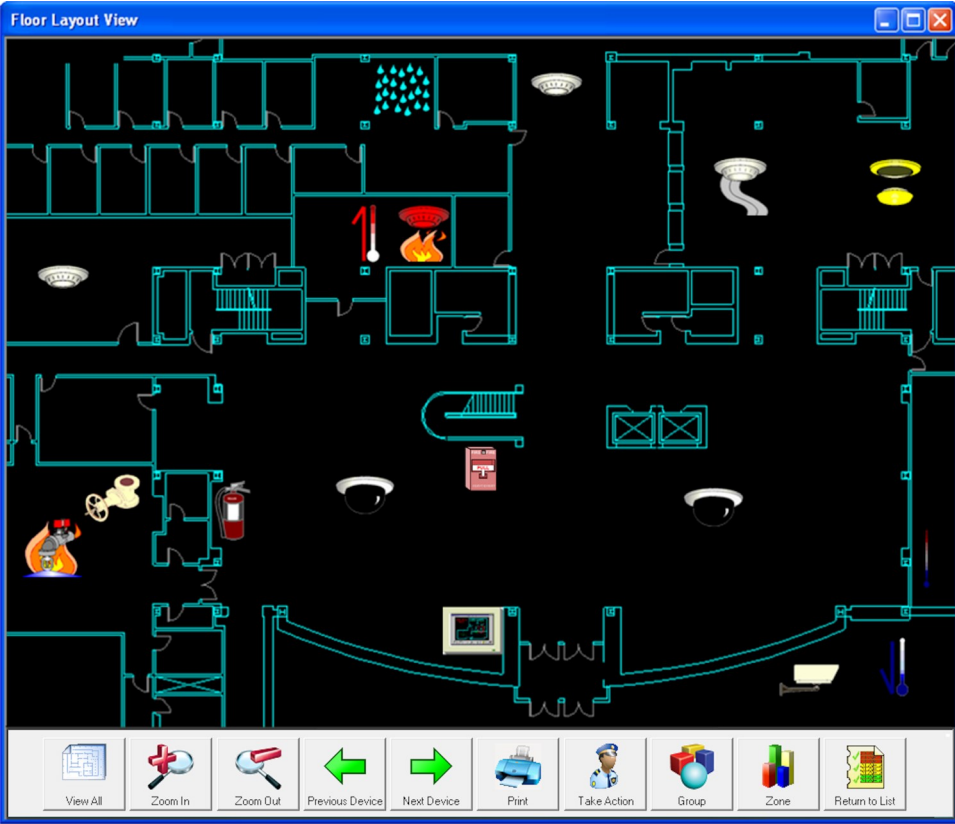
- See alarm information in real time, color-coded by status — trouble, supervisory, or alarm.
- Get emergency updates by text or email.
- Pinpoint alarms on maps and floor plans.
- Zoom in and out with just a touch.
- See instant “Take Action” instructions.
- Hear audible warnings and alerts, and use RescueLogic for mass notification.
- Network your RescueLogic system and log in wherever you are.
- Streamline alarm information from multiple equipment manufacturers.
- Connect to closed-circuit video, HVAC systems, and building controls.
- Include data from any device that has an RS-232 port.
- Check “as-built” facts against blueprints.
- Demonstrate code compliance.
- Print full reports and records.
- Use the Windows-based laptops, PCs, and touchscreen devices of your choice

Safety Made Simple

12348 PULL STATION FRONT LOBBY

Bldg. 224  
1st Floor





## SPECIFICATIONS

### Technical Requirements

- We recommend:
- Windows-based PCs and laptops
  - Windows 7 or 10 Pro, Enterprise, or Microsoft Server 2012 or 2016
  - Minimum 8 GB RAM
  - RS232/485 or TCP/IP connection; one for each control panel or network interface port
  - A 17-inch monitor; bigger is better
  - Touchscreen optional
  - Architect's CAD drawings or custom digital images for maps, floor plans, and background images

### When You Order

- Specify the total number of points you want to monitor
- Specify the number and types of panels on your site
- Specify the number of remote monitoring stations you want

The future of fire safety is here. Order your RescueLogic software today.



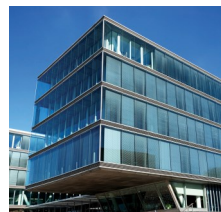
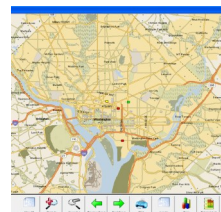
Condition	Device	Description	Type	Location
Normal	Replicator	Cadgraphics Communication with source	Cadgraphics	
Normal	System	Cadgraphics Communication with System	Cadgraphics	
TROUBLE	12345	HALLWAY 103	Smoke Detector	1st Floor
ALARM	12346	HEAT DETECTOR W MECH ROOM	Heat Detector	1st Floor
FIRE ALARM	12348	PULL STATION FRONT LOBBY	Manual Station	1st Floor
SMOKE ALARM	12349	SMOKE DETECTOR ELEVATOR LOBBY	Smoke Detector	1st Floor
VALVE CLOSED	12352	VALVE TAMPER STAIRWAY	Tamper Sw	1st Floor
WATERFLOW	12353	FIRST FLOOR SPRINKLERS	Waterflow Sw	1st Floor
Normal	Airies	Main Bldg	Panel	1st Floor
HEARTBEAT	TCP/IP	Communications monitor with system	Panel	1st Floor
NORMAL	AHU1	FIRST FLOOR AIR HANDLING UNIT	Blake Detector	1st Floor
ALARM	CAM-001	Customer Service	Camera	1st Floor

### Pricing

RescueLogic is priced by the number of points you plan to monitor. Typically, those points include field devices like smoke detectors, as well as control panels with monitored points like batteries and power supplies. Your fire alarm installer can tell you how many points you have in your system.


A basic RescueLogic system is designed for one central monitoring station. You can add more monitoring posts for a reduced fee.

Call or email for a demo or a quote.



### RescueLogic Software by Cadgraphics

Website: [www.rescuelogic.com](http://www.rescuelogic.com)  
 Email: [info@rescuelogic.com](mailto:info@rescuelogic.com)  
 Phone: (612) 722-3233

 RescueLogic software version 5.0 is a UL864 Recognized Component.

Safety Made Simple