

RESCUELOGIC®
SOFTWARE BY CADGRAPHICS®

A man with dark hair and a light beard, wearing a dark pinstriped suit, a light blue shirt, and a patterned tie, is looking upwards and to the right. The background is a blurred, modern building with a glass facade and a grid-like structure at the top.

**RESCUELOGIC® SOFTWARE
SUCCESS STORIES**

SUCCESS STORIES

RescueLogic puts YOU in control of your fire and security systems.

RescueLogic is “safety made simple.”

Inside Stories

- ▶ **Get a bird's eye view.** Page 4
- ▶ **Inspiration and innovation.** Page 6
- ▶ **One sweet fire system.** Page 8
- ▶ **A state-of-the-art upgrade.** Page 10
- ▶ **Emergency alerts by email.** Page 12
- ▶ **A higher degree of safety.** Page 14
- ▶ **Preserving the past.** Page 16
- ▶ **When dead air isn't an option.** Page 18
- ▶ **Airport maps and travel guides.** Page 20
- ▶ **Safeguarding store data.** Page 22
- ▶ **Audible emergency alerts.** Page 24
- ▶ **Quiet healing spaces.** Page 26
- ▶ **Say it in Spanish.** Page 28
- ▶ **Customize your RescueLogic system.** Page 30
- ▶ **RescueLogic puts you in good company.** Page 32
- ▶ **Call us to get RescueLogic for your site.** Page 34

RescueLogic techniques and technology are protected by U.S. Patents 6,229,429 and 6,369,695. Cadgraphics® and RescueLogic® are the registered trademarks of Cadgraphics Incorporated. “Safety Made Simple” is the service mark of Cadgraphics Incorporated.

This publication is ©2014 by Cadgraphics, Inc. All rights reserved. ISBN 978-0692224076



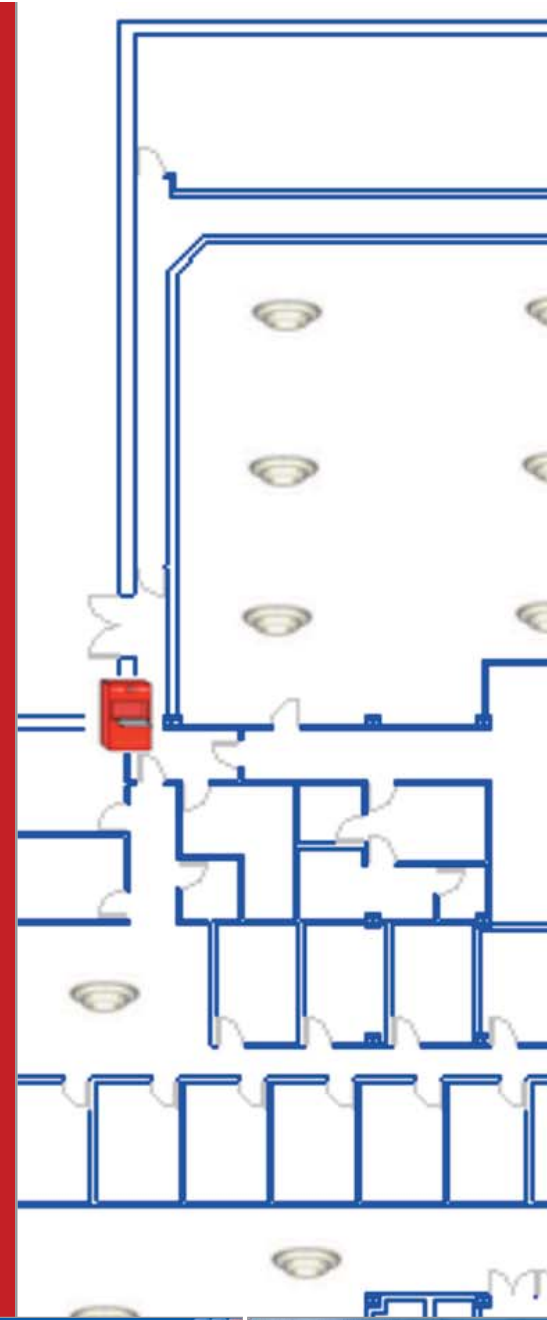


Get a bird's-eye view of your fire and security system

Does your fire and security system work for you, or do you work for it? With RescueLogic software, you can see data from every alarm and device on your site, in a single, streamlined interface.

RescueLogic displays real-time information about those alarms and devices on maps, floor plans, and color-coded lists, along with corresponding "Take Action" messages.

If your job involves fire protection, security, facility management, or emergency response, then you need RescueLogic software.



Condition	Device	Device Name
Normal	Replicator	Cadgraphics Commu
Normal	System	Cadgraphics Commu
TRUBLE	12345	HALLWAY 103
ALARM	12346	HEAT DETECTOR W
FIRE ALARM	12348	PULL STATION FRO
SMOKE ALARM	12349	SMOKE DETECTOR E
VALVE CLOSED	12352	VALVE TAMPER STA
WATERFLOW	12353	FIRST FLOOR SPRINK
Normal	Airies	Main Bldg
HEARTBEAT	TCP/IP	Communications mon
NORMAL	AHU1	FIRST FLOOR AIR HA
ALARM	CAM-001	Customer Service



Device	Type	Location
Location with source	Cadgraphics	
Location with System	Cadgraphics	
	Smoke Detector	1st Floor
ECH ROOM	Heat Detector	1st Floor
LOBBY	Manual Station	1st Floor
ELEVATOR LOBBY	Smoke Detector	1st Floor
WAY	Tamper Sw	1st Floor
CLERS	Waterflow Sw	1st Floor
	Panel	1st Floor
tor with system	Panel	1st Floor
DLING UNIT	Blake Detector	1st Floor
	Camera	1st Floor

Device Action Message

[SMOKE ALARM] 12349 SMOKE DETECTOR ELEVATOR

Alarm condition! Respond immediately!

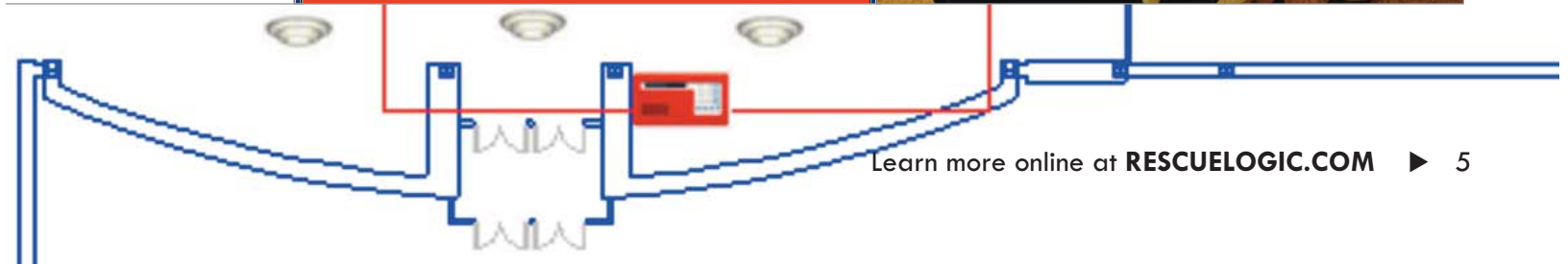
A smoke detector has sensed fire. Locate the alarm by pressing the graphics key. If any other smoke detectors are in alarm, follow evacuation plan.

Bldg 224 1st FIRE - This Fire Alarm Condition is in Building 224, on the 1st Floor in the east wing.

224 Fire Alarm -

Follow the procedures for this alarm condition. If you have determined that this is a false alarm that needs service, call:

**Security International
1-866-665-2100**



The inspiration and innovation behind RescueLogic

RescueLogic makes it easy to monitor building safety and security from a standard personal computer — and it's been tried, tested, and proven to work by customers just like you, all around the world.

Our company's founder, Dan Horon, was a fledgling fire protection engineer when he decided to use AutoCAD to show fire alarms on a floor plan. His idea was a stroke of innovation, imagination, and inspiration.

Horon's invention immediately solved a whole host of problems. Before he introduced his software, it was almost impossible to update and monitor fire-alarm systems as buildings were updated and remodeled. Technicians and building managers were frustrated by alarm systems that combined hardware and devices from multiple manufacturers — most of which didn't communicate with each other, or work well in combination. And when alarms went off during tests, false alarms, or emergencies, security teams were forced to analyze confusing numeric data, assess events on the fly, and create service records and reports by hand.

Horon started selling the software by word of mouth, to customers who were serious about managing their facilities. He developed a simple plug-and-play import function to get data from alarm systems and devices, as well as an intuitive drag-and-drop process for showing them on maps and floor plans. The software even works with building control systems. In fact, it's an ingenious tool for total facility management alerts.

For years, Horon sold the software as Cadgraphics. The newest version of the software, RescueLogic, integrates fully with the industry's most popular fire and security alarms, panels, devices, and networks — and it works with standard computers, laptops, printers, and cell phones.





Learn more online at [RESCUELOGIC.COM](https://www.RESCUELOGIC.COM) ▶ 7

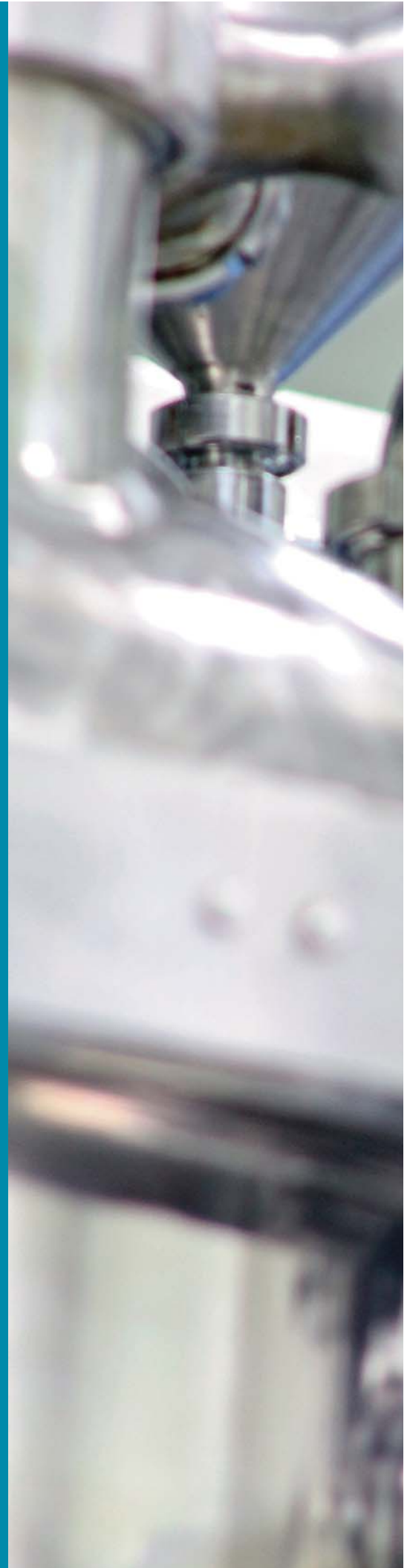
Nine panels, five buildings, and one sweet fire system

The makers of an artificial sweetener in the southern U.S. have a wide range of safety equipment in place — including nine different fire panels from five manufacturers, housed in nine separate buildings.

Facility managers needed to manage the fire and security systems that were sprinkled across the campus. With RescueLogic software, they now monitor all nine buildings from a single personal computer.

The simple, streamlined interface tracks a wide range of fire-alarm devices, including waterflow switches, smoke detectors, pull stations, tamper switches, horns, strobe lights, and speakers.

RescueLogic works with today's most popular fire, security, and building control systems. RescueLogic also works with standard personal computers, laptops, touch-screen computers, and printers.





Learn more online at [RESCUELOGIC.COM](https://www.rescuelogic.com)

A state-of-the-art upgrade gives new life to old gear

Building managers at a midwest production plant found themselves in real trouble when the facility's central receiving station went down, and they lost their ability to monitor alarms and safety equipment.

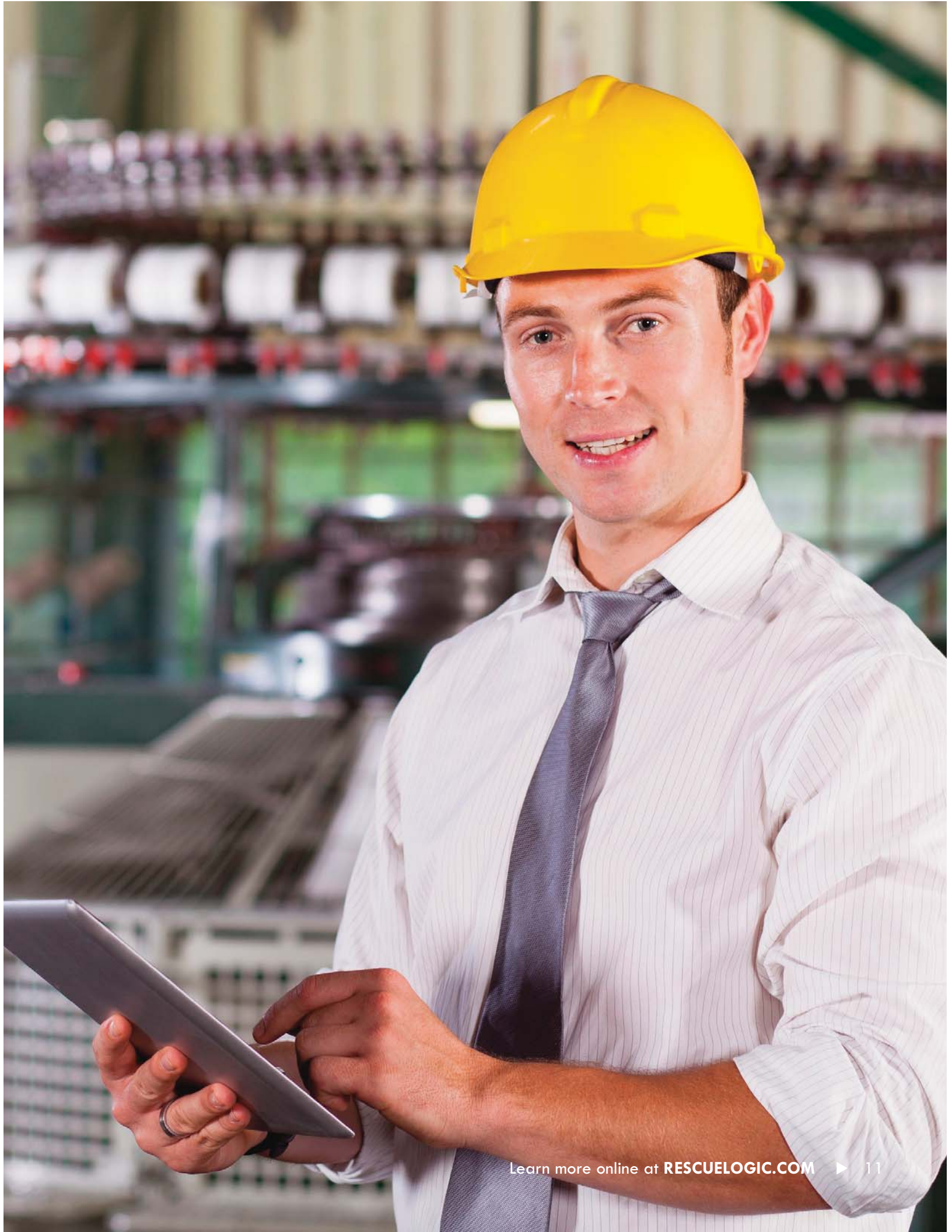
Those alarms were critical: almost 1,000 people work at the site, in nine buildings on a campus that's more than a century old. The site's safety equipment had been pieced together over many years, and obsolete parts couldn't be replaced.

The plant's fire-alarm installer called Cadgraphics, and within days, facility managers were back in control of their safety system. They simply abandoned their dedicated network wiring and replaced the outdated front-end system with RescueLogic software.

The short-term fix gave them the time they needed to make long-term improvements. Within two months they actually replaced all their alarm panels and systems with current technology.

They didn't replace their RescueLogic system, though. As each new component went on line, the RescueLogic database was automatically updated, ensuring that facility managers could keep a watchful eye on their site for years to come.





Emergency alerts by email keep you up to date

RescueLogic software helps ensure that decision makers and key personnel always know the status of their sites. That way, facilities don't go unprotected when key personnel go home.

A wide range of hospitals, telecommunication centers, processing plants, and factories use the RescueLogic "Mail Dispatcher" add-on feature to send automatic email alerts whenever alarms and devices go into trouble or alarm. An optional GPS feature provides detailed maps and directions to any alarm's location.

Site managers can evaluate complex situations quickly, wherever they happen to be — and in the process, they save time, money, property, and lives.



A higher degree of safety for a major college campus

At one of the country's largest private universities, more than 200 buildings are spread out across 8,000 acres. The school even has its own police department and fire prevention group.

Campus safety managers wanted to supervise all of their alarms simultaneously, but the system wasn't networked — and the university didn't have copper or fiber communication lines to provide a dedicated backbone for a networked alarm system.

School administrators turned to RescueLogic, which had a turnkey solution for the site. Technicians simply added basic Ethernet modules to the buildings' control panels. With that one adjustment, they could use RescueLogic to monitor all of the alarm systems using the university's IP network.

Now first responders can access detailed alarm information during maintenance and emergencies, without installing an expensive, outdated network of dedicated phone lines or fiber optic cables.





Preserving the past for future generations

A well-known museum on the eastern seaboard is actually a five-building complex, complete with facilities the public rarely sees — like historical archives, scientific research labs, and secure storage areas.

Every area is linked to monitoring equipment, including IP cameras, temperature and humidity sensors, building automation controls, and emergency equipment. The museum has more than 2,000 sensors online — many of which send a constant stream of data to the museum's RescueLogic system.

The museum director and facility manager monitor that information from their desks and a guard station. They've also programmed their RescueLogic system to send individual emails to department managers and building tenants whenever specific devices go into trouble or alarm — so if artifacts are in danger of water damage, or a researcher's experiment is in jeopardy, they'll have time to save their work.



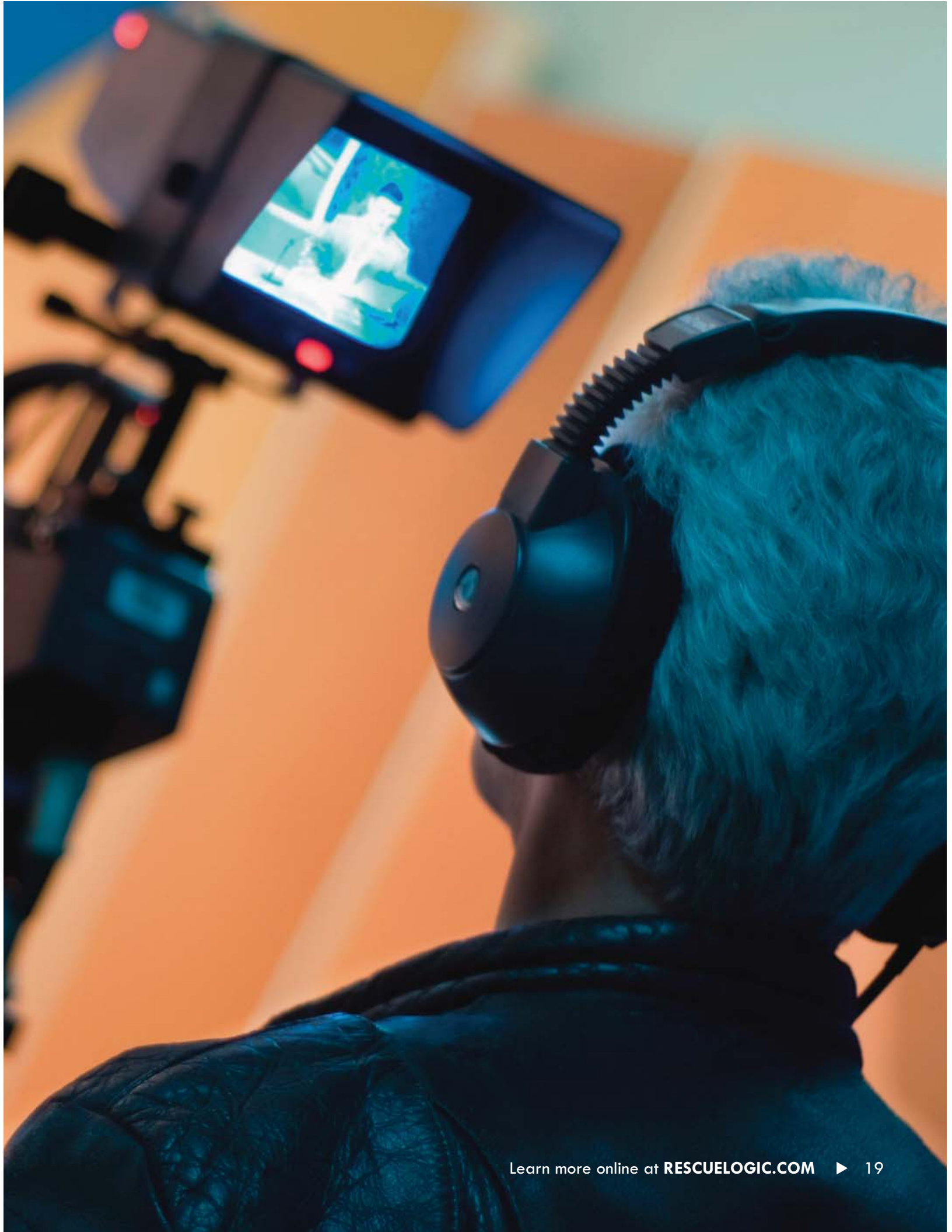


RescueLogic TV: When dead air isn't an option

For global television networks that broadcast 24 hours a day, a fully monitored alarm system is a must. Production schedules are timed to the second. Live broadcasts can't go off the air. Newscasters, program hosts, and celebrity guests can't leave the studio for a false alarm. Even a momentary shutdown can be devastating, because viewers will change channels and stations will lose millions of dollars in advertising revenue.

That's why some of the world's biggest sports and lifestyle networks use RescueLogic software to monitor alarms in their studios and production facilities. They watch their fire and security systems constantly, so they can stay on the air — and the rest of us can keep watching the show.





Airport maps and travel guides for first responders

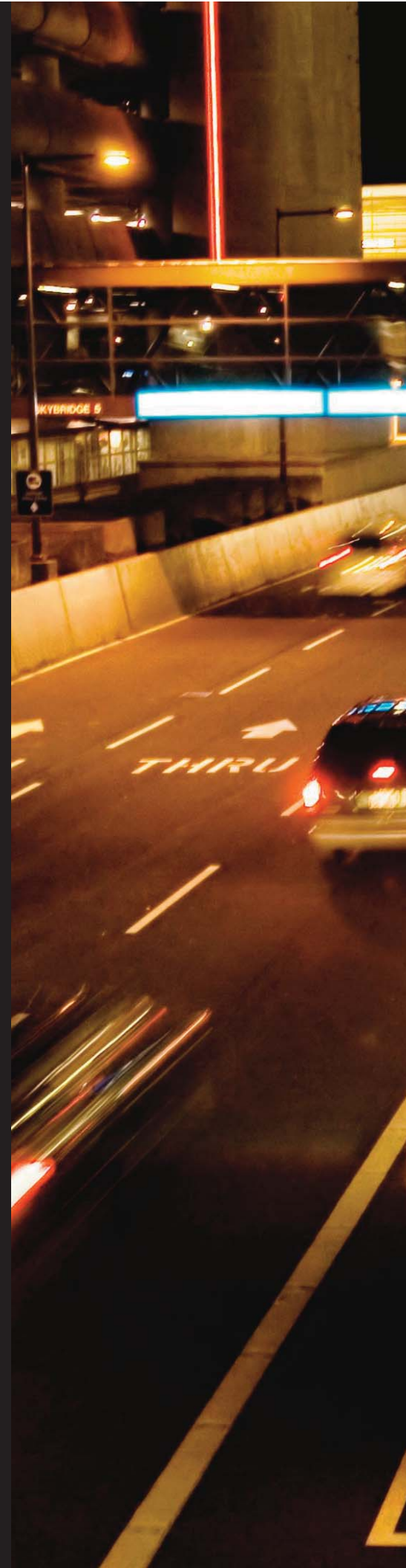
Sprawling modern airports can be difficult places to navigate — even for employees behind the scenes.

The fire department at one of the nation's busiest airports has relied on Cadgraphics for more than 10 years, with RescueLogic stations at the 911 emergency center, the alarm engineer's desk, the fire chief's office, and the fireman's pole.

In 2012, the airport fire department was the first to implement RescueLogic's new GPS feature. During emergencies, it automatically sends email notifications to firefighters, who receive those emails on their cell phones.

With one click, they can see the exact location of more than 7,000 alarms. They can get maps, driving directions, and pedestrian routes to the site. They can even see which entrances they should use, and they can know whether airport traffic will impede their travel.

When there's trouble in the terminal or on the tarmac, first responders rely on RescueLogic.





SPEED
LIMIT
20

2VAV
C/AV

Safeguarding store data for a worldwide retailer

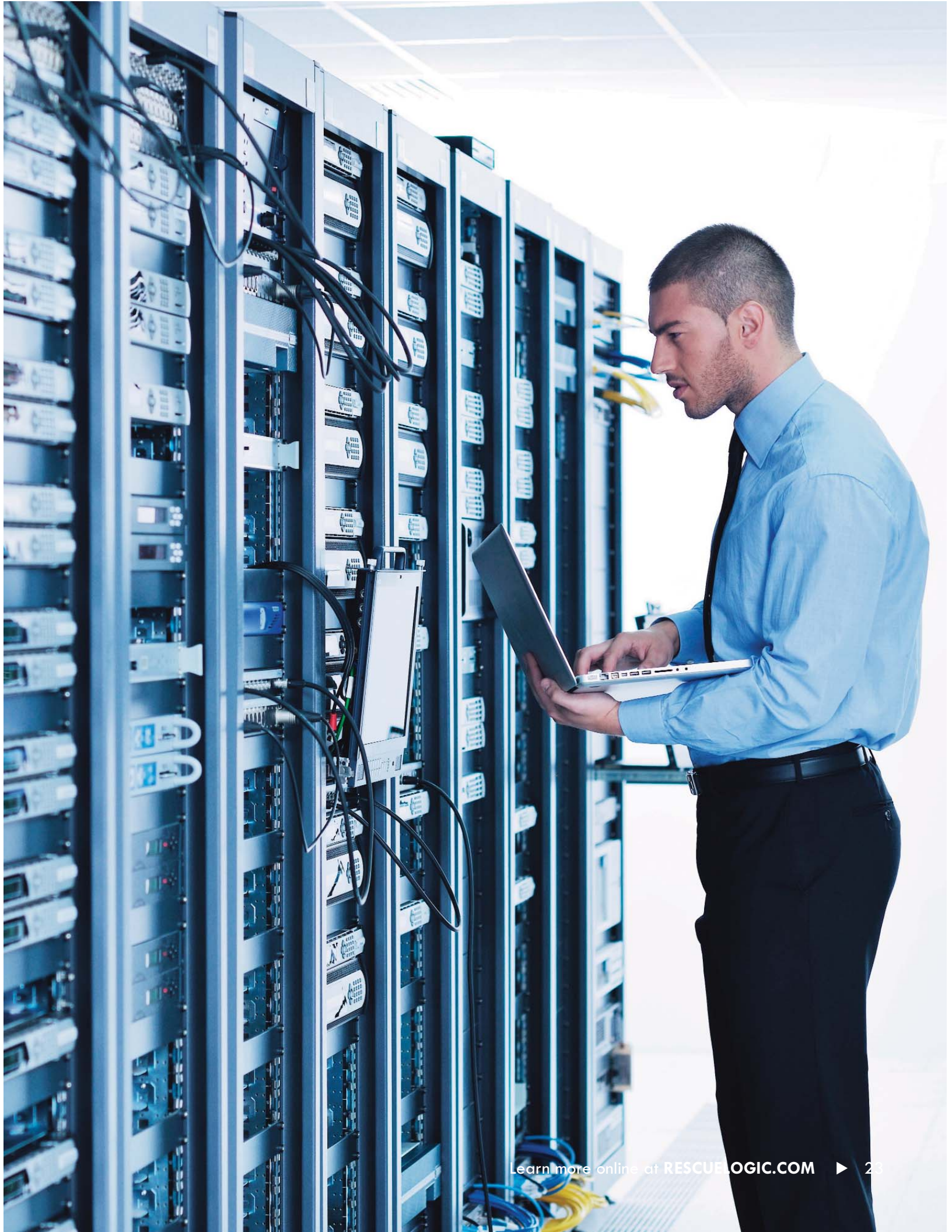
One of the world's largest retailers — a chain store that serves millions of customers each week, in dozens of countries around the world — tracks all of its business resources from a computer data center at its global headquarters.

The center's databank keeps complete records of each store and warehouse's inventories, as well as cash-register accounts, staff reports, and employee records. That information is so valuable that the retailer actually built a second, redundant data center to back up its computer files — and it safeguards both of them with RescueLogic software.

The RescueLogic system is largely dedicated to fire detection and suppression. It monitors spot smoke detectors under a raised floor and at the ceiling, as well as VESDA smoke detectors that pull smoke in through a network of sampling tubes.

RescueLogic software is an economical way to protect billions of dollars in sales.



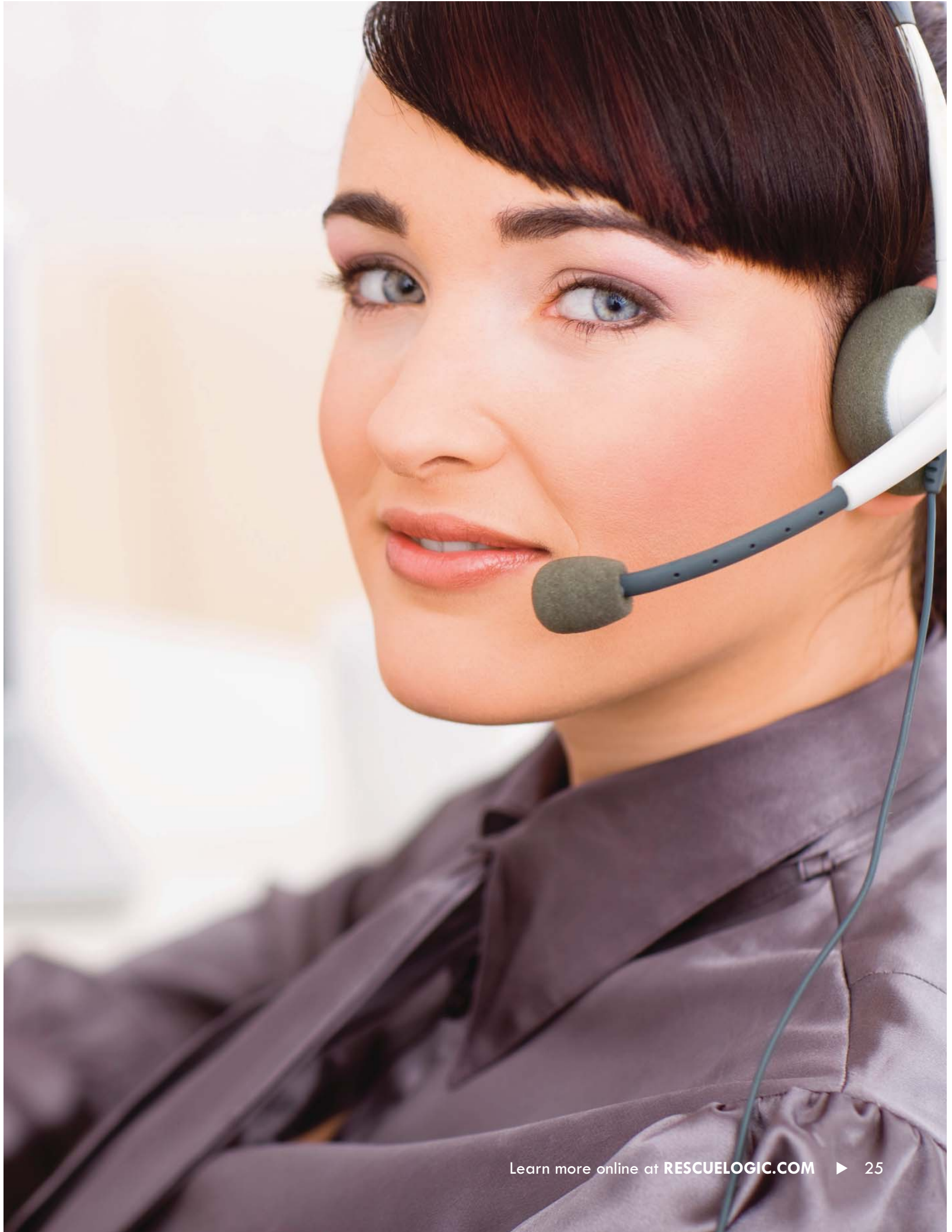


Attention all personnel: Audible emergency alerts

More than 1,000 people work in an American paper mill that manufactures some of the most recognized products in the world, including tissues and paper towels. Managers at the mill wanted a reliable way to broadcast audible emergency messages over the public-address system — so they turned to Cadgraphics' software.

Originally, facility managers had relied on voice evacuation alerts that had come with their fire alarm system. Unfortunately, before the system was even completely installed, they realized that the system didn't have enough memory capacity for all the messages they wanted to play.

Cadgraphics developed a custom application that's now available to every other customer — the RescueLogic "Announcer" program. Now administrators have the ability to broadcast a virtually unlimited number of emergency alerts. They can even mix and match message segments to create variations of each alert, customized by the type, condition, and location of alarms and monitoring equipment.



Quiet healing spaces for children and their families

Like most hospitals, a well-known children's hospital was constantly being remodeled and reconfigured. Typically, portions of the fire alarm system would be disabled while some areas and zones were under construction. False alarms were a problem — especially for caregivers in the pediatric intensive care unit, where children couldn't be evacuated without upsetting patients and parents alike.

Over the course of 20 years, the hospital's alarm system had undergone major changes. During that time, new alarms and new panels from several manufacturers had been added to the system, and hundreds of alarm devices that were listed on spreadsheets were inaccurate.

RescueLogic helped heal the system, almost overnight. The hospital's maintenance engineer simply worked with the IT department to connect each of the hospital's alarm panels to RescueLogic, which automatically learned about each device installed.

Now the hospital uses RescueLogic to schedule maintenance on the alarm system, so that areas of the hospital that aren't under construction stay fully protected. Building managers can also add notes to the RescueLogic system about which contractors are in the building, as well as their timelines and their contact information.





Say it in Spanish: RescueLogic speaks your language

In an emergency, you need to communicate quickly and clearly. But if you speak English, and your security team speaks Spanish, words may fail you — with disastrous results.

RescueLogic can help you bridge the language gap, because RescueLogic can communicate in *any* language.

In fact, RescueLogic has even published a free guide to the Spanish words and phrases you'll need to set up a bilingual RescueLogic system.

The handbook, *Say It in Spanish*, includes hundreds of terms that are commonly used in fire, security, and facility management. You can use it when you set up your system's maps and floor plans, and you can follow its suggestions for a wide range of emergency "Take Action" instructions.

Try it, and you'll discover that RescueLogic truly is "safety made simple" — *seguridad simplificada*.



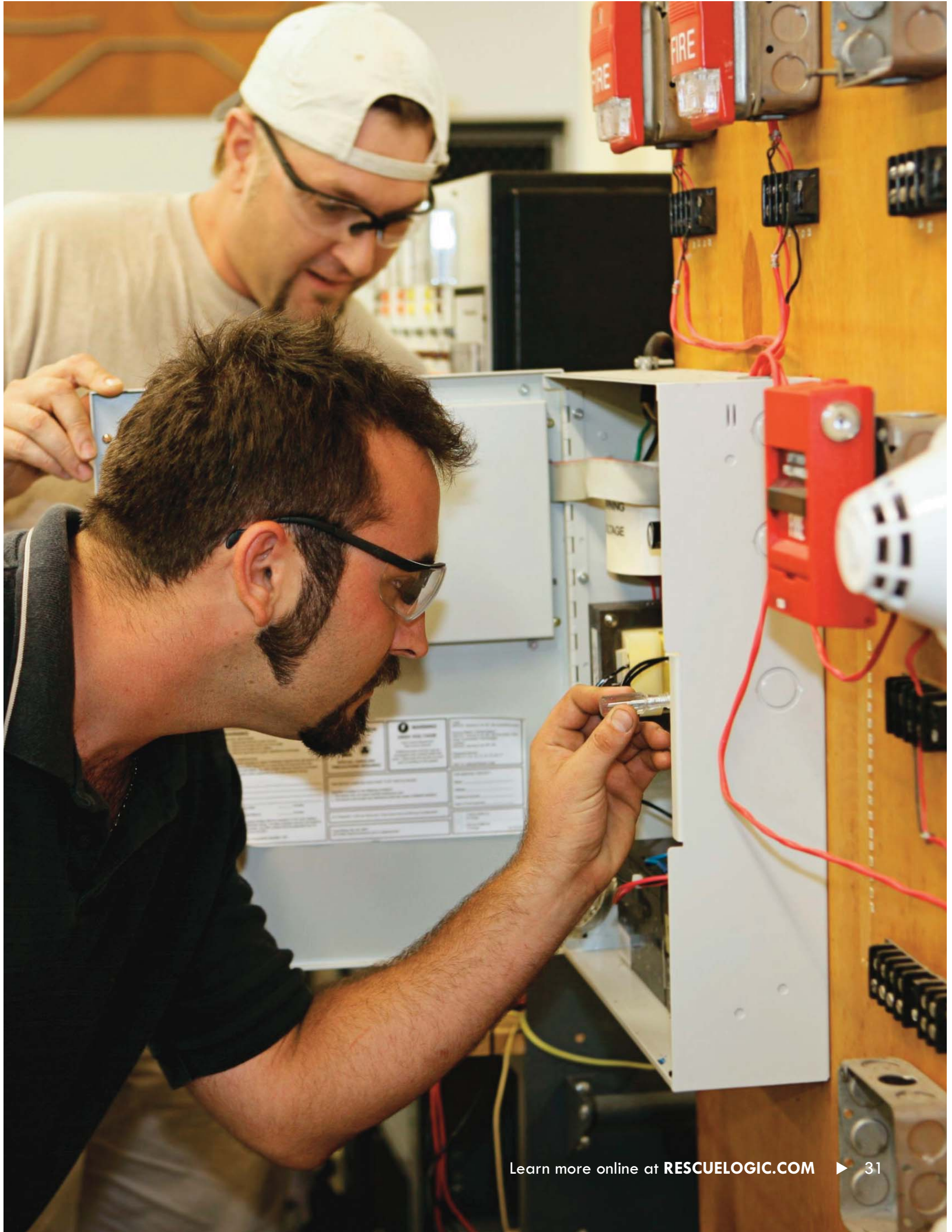


Customize your RescueLogic system with extra features

Every RescueLogic system comes ready to collect and interpret data from the panels and devices on your site. You can also customize your RescueLogic system with additional features, including:

- ▶ **SYSTEM WATCH** to monitor your system from a remote computer
- ▶ **ACTIVITY REPORTS** to compile printable records of system activity
- ▶ **MAIL DISPATCHER** to send automatic email alerts of alarms
- ▶ **REPLICATOR** to make a live backup of your event database
- ▶ **ANNOUNCER** to add voice messages to your public address system
- ▶ **VERBALERT** to add audible alerts for your security team





RescueLogic software puts you in good company

ADM

Aflac

Ahold

AK Steel

Alcoa

Alison Control Inc.

Allergan

Allina Hospitals & Clinics

Ameritech

AT&T

Bank of America

BASF

BellSouth Communications

Boeing

Bolthouse Farms

California State University

Capital One

Chicago Stock Exchange

Coca-Cola

ComEd

ConocoPhillips

Dell

Delphi

Delta Airlines

Deutsche Bank

Duke University

DuPont

Eli Lilly

ESPN

Exxon Mobil

Fidelity Investments

Harvard's Field Museum

Firestone

Freddie Mac

General Dynamics

GoDaddy

Goldman Sachs

Goodyear

Google

Hilton

Home Depot

IKEA

Iron Mountain

Johnson & Johnson

Kerr-McGee

Kimberly-Clark

Kirtland AFB

Lear Corporation

Levi Straus

Liberty University

Lifescan

Lockheed-Martin

Lucent Technologies

Macy's

MasterCard

Mayo Clinics

MCI

Medtronic

Mercedes Benz

Merck

Miami Dade County

Michigan State University

Microsoft

Mills Pride

Monroe Shocks

**National Institute of
Standards and Technology**

**National Oceanic and
Atmospheric Administration**

Nationwide Insurance

Nestle Purina

New York Hospital

New York Life

Nokia

Northrop Grumman

NutraSweet

Oracle

Pacific Bell

Pepsico

Planet Hollywood

PNC Park

Port of Seattle

Remann Detention

**Riyadh Village,
Saudi Arabia**

San Diego Gas & Electric

San Jose Civic Center

SAPPI Fine Paper

Savvis Communications

Scotiabank

**Scripps Networks
(HGTV & DIY)**

Seagate

Sidwell Friends

Sony

Southwestern Bell

Sprint

T-Mobile

Toyota

Unilever

U.S. Army

Unisys

United Airlines

United Nations in Liberia

University of Pennsylvania

University of Utah

Verizon

Victoria's Secret

Victory Base Camp Iraq

VISA

Wal-Mart Stores, Inc.

Wells Fargo

Westinghouse

Yahoo!

RESCUELOGIC®
SOFTWARE BY CADGRAPHICS®

Call us to get RescueLogic for your site

Cadgraphics, Inc.

Makers of RescueLogic® Software
for Fire and Security Systems
Minneapolis, Minnesota, USA

Phone (612) 722-3233

Email info@rescuelogic.com

Website www.rescuelogic.com